



# DC1500/1550

Control Types

AB220A (DC1500)

AB320A (DC1550)



*With new functions*



FRANKL & KIRCHNER GMBH & CO KG  
SCHEFFELSTRASSE 73 · D-68723 SCHWETZINGEN  
Tel.: ++49-62 02-20 20 · Fax: ++49-62 02-20 20 15  
E-Mail: info@efka.net · Internet: <http://www.efka.net>



OF AMERICA INC.  
3715 NORTHCREST ROAD · SUITE 10  
ATLANTA · GEORGIA 30340  
Phone: +1-7 70-57 70 06 · Fax: +1-7 70-4 58 38 99  
E-mail: [efkaus@aol.com](mailto:efkaus@aol.com)



ELECTRONIC MOTORS SINGAPORE PTE. LTD.  
67, AYER RAJAH CRESCENT #05-03  
SINGAPORE 139950  
Phone: +65-7 77 24 59 · Fax: +65-7 77 10 48  
E-mail: [efkaems@cyberway.com.sg](mailto:efkaems@cyberway.com.sg)

**Standard Accessory:**

- External actuator EB301A



**Special Accessories:**

- Position sensor HSM001
- Undertable mounting kit
- Light barrier module LSM002



- Control Panels with Integrated Thread Monitor Function

**- VB10**

Can be mounted on machine head for easy switching of functions

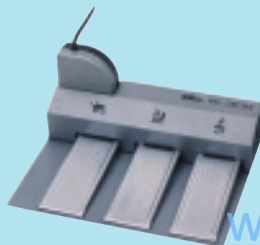


**- VB20**

With additional programming of 8 sewing patterns and 40 seams



- Pedal with actuator FB302 for standing operation



**Universally Programmable Functions**

Mode	Type	Brand
0	Lockstitch	Pfaff, Dürkopp/Adler, Toyota, Brother, Juki
1	Lockstitch	Singer
2	Lockstitch	Singer with thread trimmer stop
3	Lockstitch	Dürkopp/Adler cl. 467, cl. 767, N291
4	Refrey (chainstitch)	All brands
5	Chainstitch	All brands
6	Chainstitch with tape cutter/fast scissors, M1/M2	All brands
7	Overlock	All brands
8	Backlatch	Pegasus
9	Backlatch	Yamato
10	Refrey (lockstitch)	All brands
13	Lockstitch	Pfaff (1425)
14	Lockstitch	Juki (5550-6, 5550-7)
16	Overlock	Feed-off-the-arm machines e. g. Yamato (FD62)
17	Stitch lock	Pegasus
19	Lockstitch	Macofrey
20	Lockstitch	Juki (LU1510-7)
21	Stitch lock	Yamato
22	Lockstitch	Brother (B-891)

Adapter cords for various sewing machine brands are available

**10 Individually Programmable Switch Inputs**

Mode	Function	Mode	Function
0	Light barrier	13	High lift for walking foot with speed limitation n10 (operational mode not stored)
1	Needle up/down	14	High lift for walking foot with speed limitation n10 (operational mode stored)
2	Needle up	15	Chain cutter/fast scissors
3	Single stitch	16	Intermediate backtack/ stitch condensing
4	Full stitch	17	Stitch regulator suppression/recall
5	Needle to position 2	18	Unlocking the chain
6	Machine run blockage N.O.	19	Preset counter of the bobbin thread monitor
7	Machine run blockage N.C.	20	Positioning speed n1
8	Machine run blockage unpositioned N.O.	21...	
9	Machine run blockage unpositioned N.C.		
10	Automatic speed n12		
11	Limited speed n12		
12	Sewing foot lifting, pedal in position 0 (neutral)		

