

Efka[®]

motion by innovation



Expertise in
Drive Technology
and Automation



Energy efficient
RoHS compliant
ECO-friendly
easy to use - simply good

WWW.EFKA.NET

AB610A

AB611A

Efka[®]

Frankl & Kirchner GmbH & Co KG
Antriebs- und Steuerungstechnik
Drives and Control Systems

www.promelectroavtomat.ru

AB610A / AB611A

- Useful for light (DC1500) and heavy-duty (DC1550) sewing applications
- Digital programming directly on the control box
- Programmable maximum rotational speed, acceleration and braking curves
- Operating hours counter
- Machine operating time monitoring with optical indicator when service required

- Flash technology, no Eprom
- Connection for USB memory stick
- Universal mounting above or below the tableboard (undertable mounting set as special accessories)
- Operates with V belt or timing belt (different transmission ratios possible)
- Pedal actuation using EB401 analog actuator

AB610A

- The ideal positioning drive for simple sewing machines
- Programmable for unpositioned stop as replacement for lever stop motors
- Programmable for two stop positions and soft start function
- Up to 80% energy savings in comparison with clutch motors

AB611A

- Universally usable for sewing machines with foot lift and thread trimm:

Lockstitch - Pfaff, Dürkopp Adler, Brother, Juki, Singer, and other brands

Lockstitch (medium to heavier duty) - Dürkopp Adler, Pfaff, Juki, Brother, and other brands

Chainstitch - All brands

Overlock - All brands

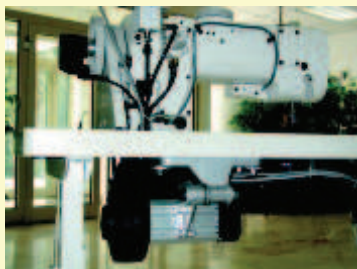
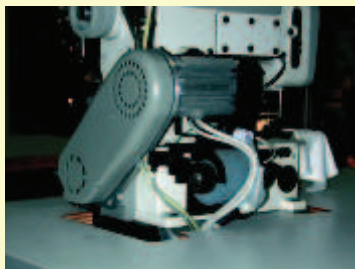
Backlatch - Pegasus, Yamato

Adapter cords for various sewing machine brands are available

- Programmable light barrier functions
- 6 short-circuit proof signal outputs with overload protection
- 7 individually programmable switch inputs
- Separate knee switch connection for KN19

Direct Mounting

Undertable Mounting



- Direct mounting kits available for Pegasus EX/EXT, W500/W600, W1500, W2600, M700

Standard Accessory



EB401

External actuator

Special Accessory



HSM001
Position sensor

Special Accessory

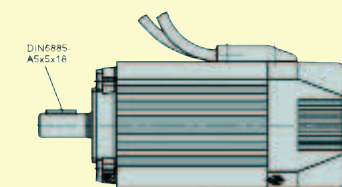


IPC001
Pulse encoder

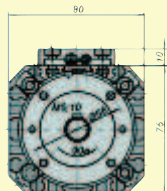
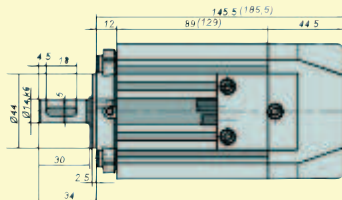
Special Accessory



LSM002
Light barrier module

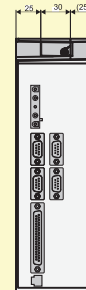
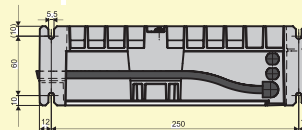
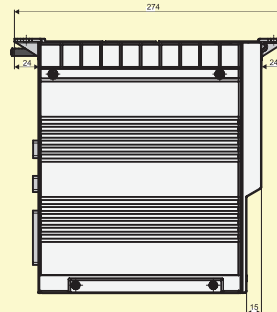
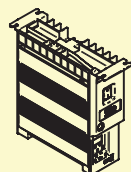


DC1500 (DC1550)



Weight of motor:
DC1500 - 2.125 kg
DC1550 - 3.120 kg

KL2312



Weight of control:
2.46 kg

KL2569

Efka

FRANKL & KIRCHNER GMBH & CO. KG
SCHEFFELSTRASSE 73 • 68723 SCHWETZINGEN
Tel.: 06202 2020 • Fax: 06202 202115
E-Mail: info@efka.net • www.efka.net

www.promoelectroavtomat.ru

Efka

OF AMERICA INC.
3715 NORTHCREST ROAD SUITE 10
ATLANTA, GEORGIA 30340
Phone: +1 (770) 457-7006 Fax: +1 (770) 458-3899
E-mail: efkaus@bellsouth.net

Efka

ELECTRONIC MOTORS SINGAPORE PTE. LTD.
67, AYER RAJAH CRESCENT 05-03
SINGAPORE 139950
Phone: +65 67772459 Fax: +65 67771048
E-mail: efkaems@efka.net