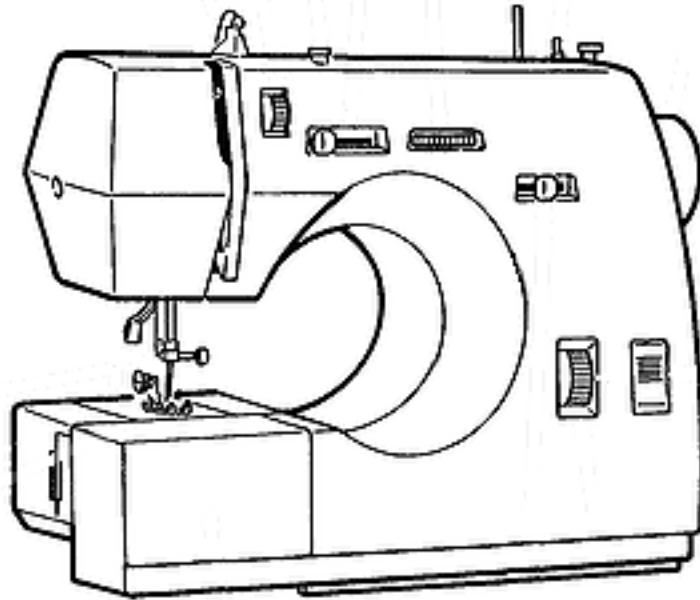


SINGER® 2 & 5 Stitch Pattern Machines



Instruction Manual



2 & 5 Stitch Pattern Machines

TABLE OF CONTENTS

[IMPORTANT SAFETY INSTRUCTIONS](#)

[KEEPING SEAMS STRAIGHT](#)

[PRINCIPAL PARTS](#)

[TURNING SQUARE CORNERS](#)

[STANDARD ACCESSORIES
INCLUDED WITH MACHINE](#)

[ADJUSTING NEEDLE POSITION](#)

[CONNECTING MACHINE](#)

[ADJUSTING THREAD TENSION](#)

[RUNNING MACHINE](#)

[RECOMMENDED SETTINGS
AND APPLICATIONS](#)

[CHOOSING AND CHANGING NEEDLES](#)

[ADJUSTING STITCH WIDTH](#)

[FREE ARM SEWING](#)

[ADJUSTING STITCH LENGTH](#)

[CHANGING PRESSER FOOT](#)

[FREE MOTION EMBROIDERY](#)

[REPLACING PRESSER FOOT WITH SHANK](#)

[INSERTING A ZIPPER](#)

[WINDING A BOBBIN](#)

[SEWING BUTTONHOLES](#)

[THREADING BOBBIN CASE](#)

[CARING FOR YOUR MACHINE](#)

[INSERTING THREADED BOBBIN CASE](#)

[REMOVING AND REPLACING LIGHT BULB](#)

[THREADING MACHINE](#)

[CLEANING YOUR MACHINE](#)

[RAISING BOBBIN THREAD](#)

[OILING MACHINE](#)

[SELECTING A PATTERN](#)

[FABRIC, THREAD AND NEEDLE TABLE](#)

[STRAIGHT STITCHING](#)

[PERFORMANCE CHECKLIST](#)

[STITCHING IN REVERSE](#)



2 & 5 Stitch Pattern Machines

INSTRUCTION SYMBOLS

To simplify understanding, the following symbols are used throughout the operator's manual.



Turn power off.



Press speed controller



Use hand wheel to raise needle.



Lower presser foot.



Raise presser foot.

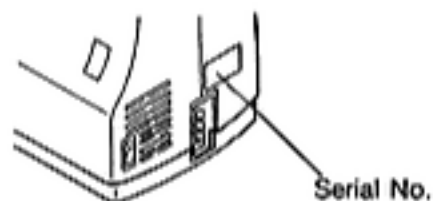
CAUTION!

POLARIZED PLUG FOR NORTH AMERICAN TERRITORIES

To reduce the risk of electric shock, this appliance has a polarized plug (one blade is wider than the other). This plug will fit in a polarized outlet only one way. If the plug does not fit fully in the outlet, reverse the plug. If it still does not fit, contact a qualified electrician to install the proper outlet. Do not change the plug in any way.

Dear Customer:

We recommend that for future reference you record the Serial Number of your Sewing Machine in the space provided. Refer to illustration below for location of the Serial Number on your machine.



Model No. _____

Serial No. _____

Correct foot controller for this model is model no.: 4C-316B (for North American Territories)

To ensure that you are always provided with the most modern sewing capabilities, the manufacturer reserves the right to change the appearance, design or accessories of this sewing machine when considered necessary.

SINGER® is a Registered Trademark of The Singer Company Limited

SINGER CUSTOMER ASSISTANCE IN THE U.S.A.
TOLL-FREE NUMBER: 1-800-877-7762

SINGER® 2 & 5 Stitch Pattern Machines

IMPORTANT SAFETY INSTRUCTIONS

When using this machine, basic safety precautions should always be followed including the following:
Read all instructions before using this machine.

DANGER

To reduce the risk of electric shock:

* The machine should never be left unattended when plugged in. Always unplug the machine from the electric outlet immediately after using and before cleaning.

* Always unplug before changing light bulb. Replace bulb with the same type rated 15 watts. Be sure to replace the face plate which covers the light bulb before operating the machine.

WARNING

To reduce the risk of burns, fire, electric shock or injury to persons:

* Be sure that the electrical voltage of the socket outlet (wall receptacle) is the same as the rated voltage of the motor.

* Use this machine only for its intended use as described in this Operator's Guide. Use only attachments recommended by the manufacturer as contained in the Operator's Guide.

* To disconnect, turn all controls to the off ("0") position, then remove plug from outlet.

* Disconnect the power-line plug from the socket outlet or switch the machine off when making any adjustments in the needle area, such as threading needle, changing needle, changing needle plate or changing presser foot, etc.

* Always unplug the machine from the electrical outlet when removing covers, lubricating, or when making any other user servicing adjustments mentioned in the Operator's Guide.

* Do not attempt to adjust the motor belt. Contact your nearest Service Center should any adjustment be required.

* Do not unplug by pulling on cord. To unplug, grasp the plug, not the cord.

* Handle the foot controller with care and avoid dropping it on the floor. Be sure not to place anything on top of it.

* Always use the proper needle plate. The wrong plate can cause the needle to break.

* Do not use bent needles.

* When sewing, keep fingers away from all moving parts. Special care is required around the sewing machine needle.

* Do not pull or push fabric while stitching. This may deflect the needle causing it to break.

* Before removing the bobbin case, remove plug from the socket outlet.

* For double insulated machines, when servicing, use only identical Singer replacement parts. See instructions for Servicing of Double-Insulated Appliances.

* Never operate the machine if it has a damaged cord or plug, if it is not working properly, if it has been dropped or damaged, or dropped into water. Return the machine to the nearest authorized dealer or Service Center for examination, repair, electrical, or mechanical adjustment.



2 & 5 Stitch Pattern Machines

IMPORTANT SAFETY INSTRUCTIONS continued...

- * Never operate the machine with any air openings blocked. Keep ventilation openings of the machine and foot controller free from the accumulation of lint, dust, and loose cloth.
- * Never drop or insert any object into any opening.
- * Do not use outdoors.
- * Do not operate where aerosol (spray) products are being used or where oxygen is being administered.
- * Do not allow to be used as a toy. Close attention is necessary when the machine is used by or near children.

SAVE THESE INSTRUCTIONS

Servicing should be performed by an authorized service representative.

This product is intended for household use.

FOR EUROPEAN AND SIMILAR TERRITORIES:

This product is suppressed for radio and television interference with the International Electrotechnical Commission requirements of the CISPR.

Machines for Great Britain and some other countries having similar wiring standards are shipped from the factory with a plug for connection to the mains. The wires in this mains lead are coloured in accordance with the following code:

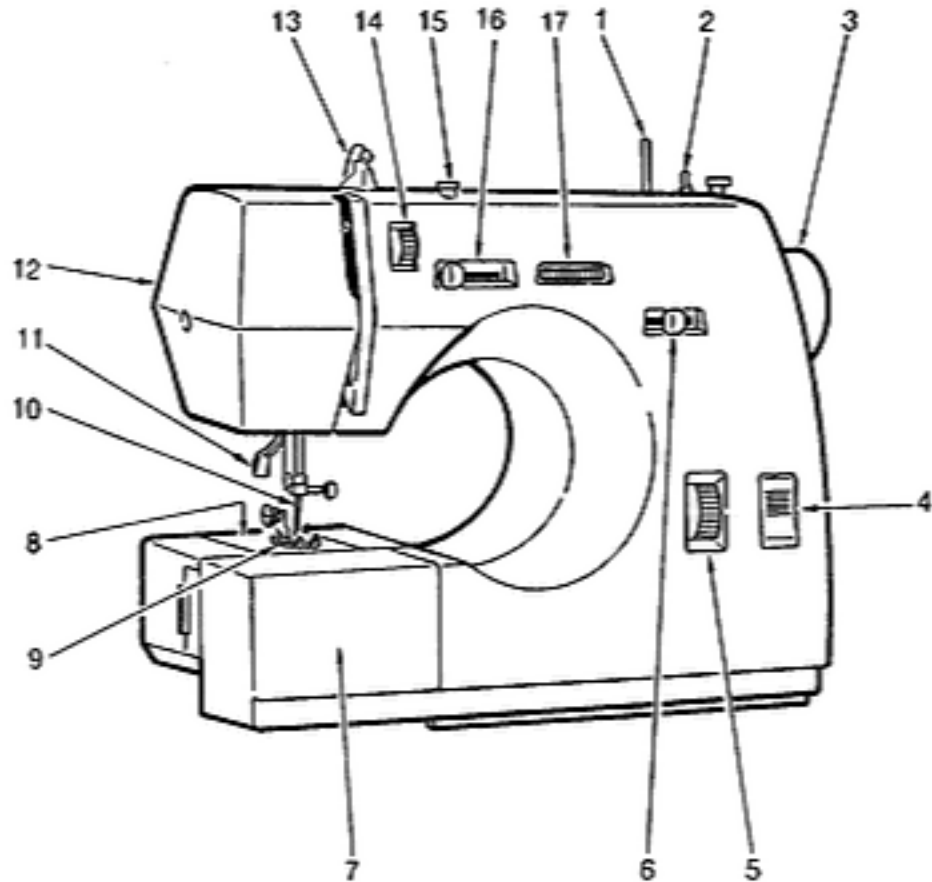
Blue: neutral (N) Brown: live (L)

As the colours of the wires in the mains lead of this appliance may not correspond with the coloured markings identifying the terminals in your plug, proceed as follows:

The wire which is coloured blue must be connected to the terminal which is marked with the letter N or coloured black. The wire which is coloured brown must be connected to the terminal which is marked with the letter L or coloured red. If a 13 Amp (BS 1363) plug is used, a 3 Amp. fuse must be fitted, or if any other type of plug is used, a 5 Amp. fuse must be fitted either in the plug or adaptor or at the distribution board. Neither cord is to be connected to the earth terminal of a three-pin plug.

SINGER® 2 & 5 Stitch Pattern Machines

PRINCIPAL PARTS



1. Spool pin
2. Bobbin winder
3. Handwheel
4. Reverse button

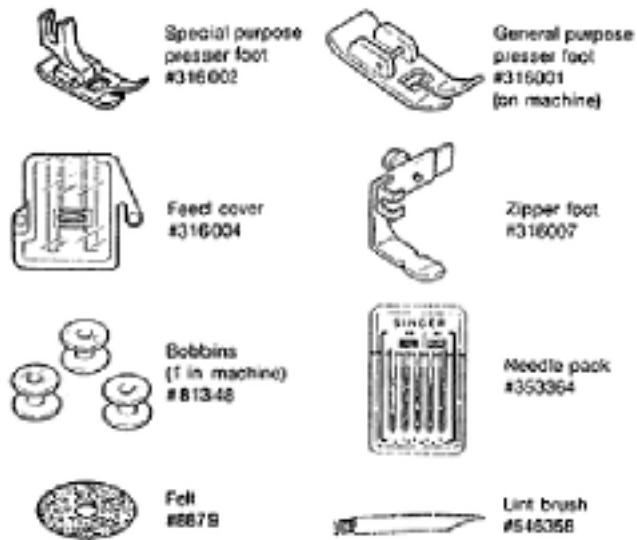
5. Stitch length dial
6. Needle position selector
7. Extension table
8. Needle plate

9. Presser foot
10. Needle
11. Presser foot lifter
12. Face plate
13. Thread guide

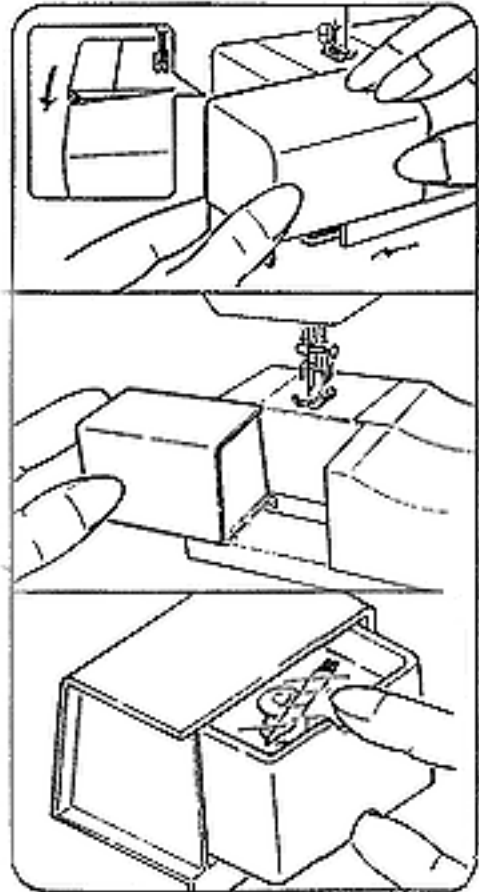
14. Tension dial
15. Bobbin winder tension disc
16. Stitch width lever
17. Pattern selector

SINGER® 2 & 5 Stitch Pattern Machines

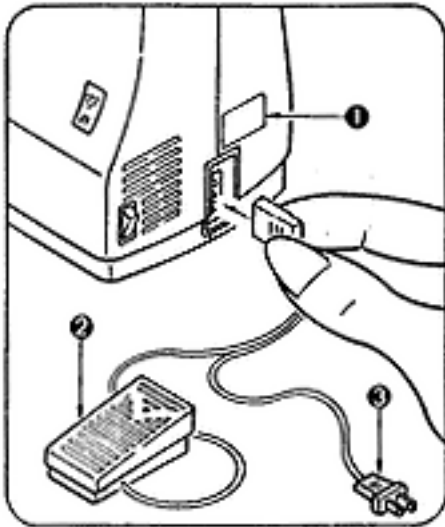
STANDARD ACCESSORIES INCLUDED WITH MACHINE



Note: Accessories are stored inside Extension table.



SINGER® 2 & 5 Stitch Pattern Machines

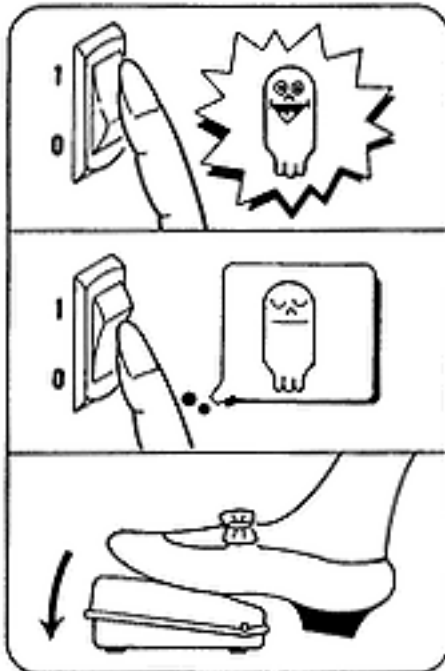


CONNECTING MACHINE

Before plugging in your machine, be sure that the voltage and number of cycles indicated on the electrical data table (1), conform to your electrical power supply.

Plug the controller (2), into the receptacle, at the right end of the machine.

Then connect the electrical power cord plug (3), to your electrical outlet.



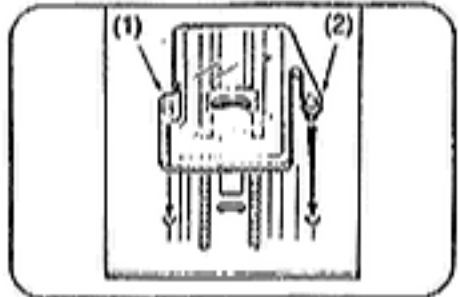
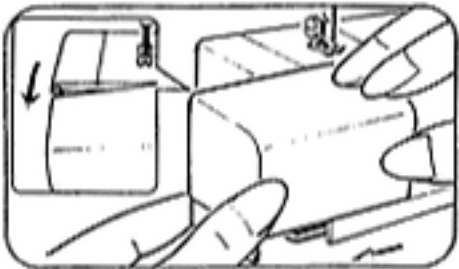
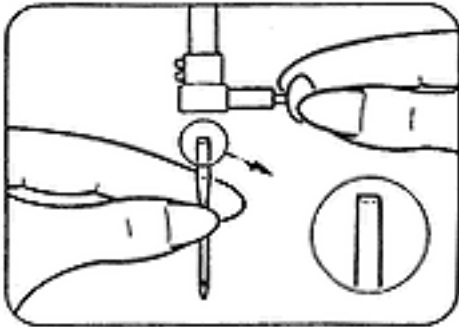
RUNNING MACHINE

Power on - press " I " side of switch.

Power off - press "O" side.

Press speed controller to run machine. The harder you press, the faster machine will sew.

SINGER® 2 & 5 Stitch Pattern Machines



CHOOSING AND CHANGING NEEDLES

IMPORTANT: For best sewing results, use only Singer needles.



Loosen needle clamp screw and remove needle. With flat side of needle to the back, insert new needle up into clamp as far as it will go. Tighten needle clamp screw securely.

FREE ARM SEWING

Pull end of extension table away from machine, as illustrated.

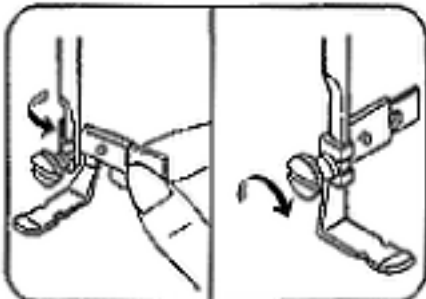
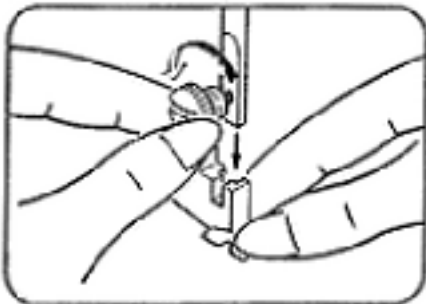
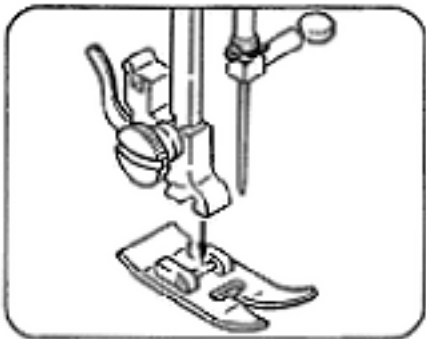
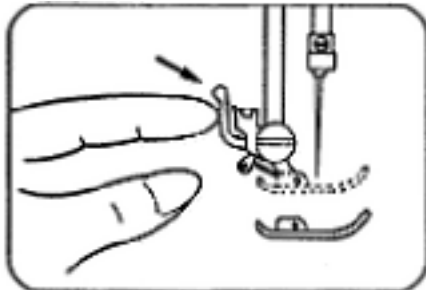
Topstitch edges on sleeves, or finish waistbands and pants legs easily.

ATTACHING FEED COVER

Press tab (1) and (2) into holes on needle plate.



2 & 5 Stitch Pattern Machines



CHANGING PRESSER FOOT



To remove presser foot, press lever on back of foot holder.

To install presser foot, center new foot under holder.

Lower presser foot lifter.

REPLACING PRESSER FOOT WITH SHANK

Remove presser foot.

Loosen presser foot screw and remove shank.

Hook new foot around presser bar.

Tighten screw.

SINGER® 2 & 5 Stitch Pattern Machines

WINDING A BOBBIN

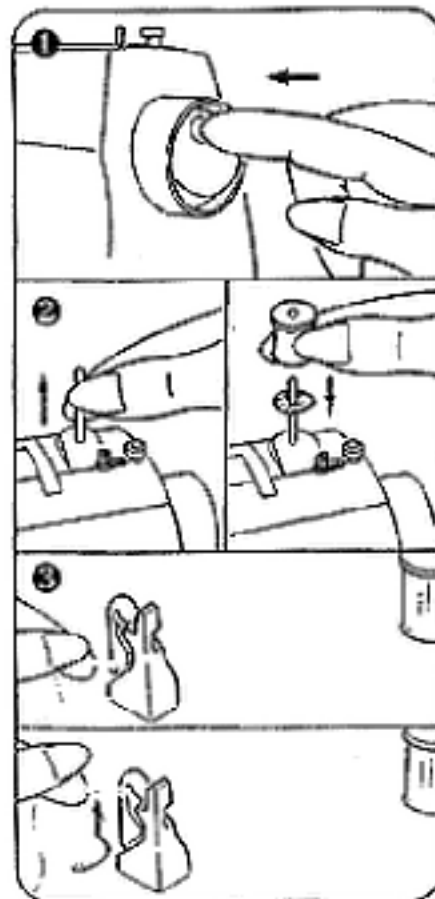
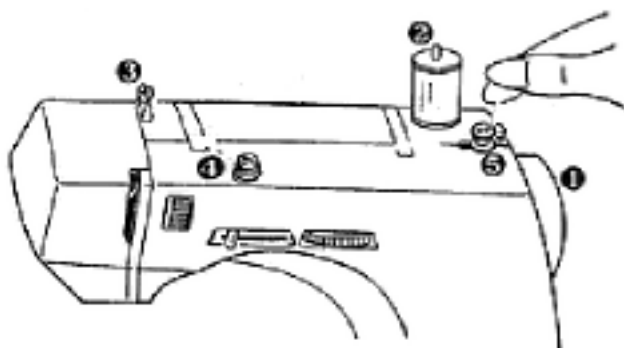
Push indent.

Raise spool pin.

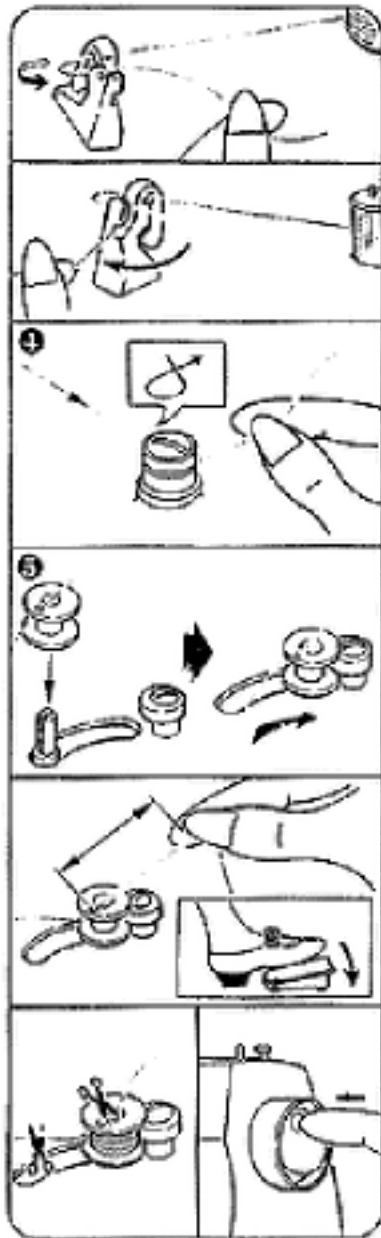
Place felt and thread onto spool pin.

Lead thread from spool to back side of thread guide.

Pull thread up to top of slot.



SINGER® 2 & 5 Stitch Pattern Machines



Winding Bobbin Continued...

Bring thread up and over thread guide to right side.

Pull thread down into indent on right side.

Wind thread clockwise around bobbin winder tension disc.

Thread bobbin and place on spindle.

Push bobbin to the right.

Hold thread end.

Step on speed controller.

Cut thread.

Push bobbin to the left.

Press side opposite indent.

SINGER®

2 & 5 Stitch Pattern Machines

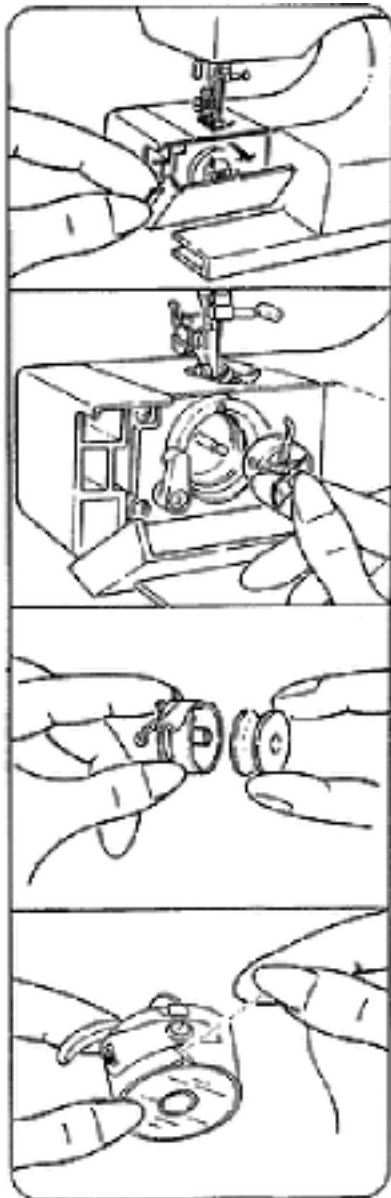
THREADING BOBBIN CASE

Open hook cover.

Take out bobbin case by holding latch.

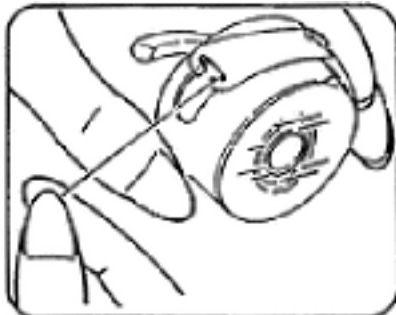
Place bobbin into bobbin case.

Pull thread into bobbin case slot.



SINGER®

2 & 5 Stitch Pattern Machines

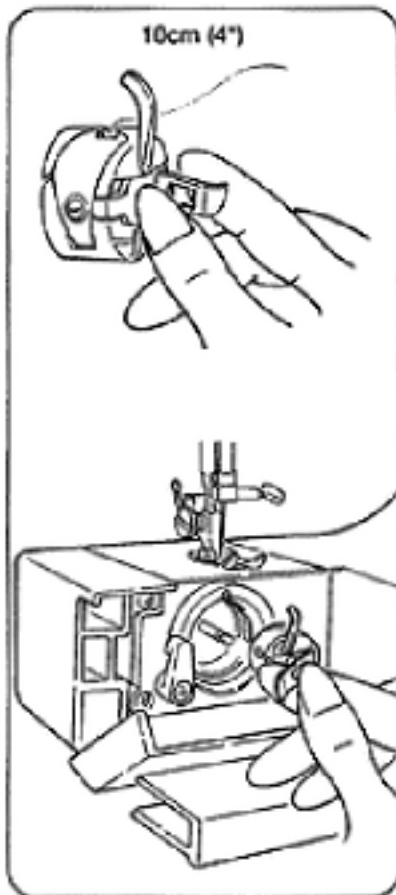


Draw thread under tension spring and into delivery position. (as illustrated)

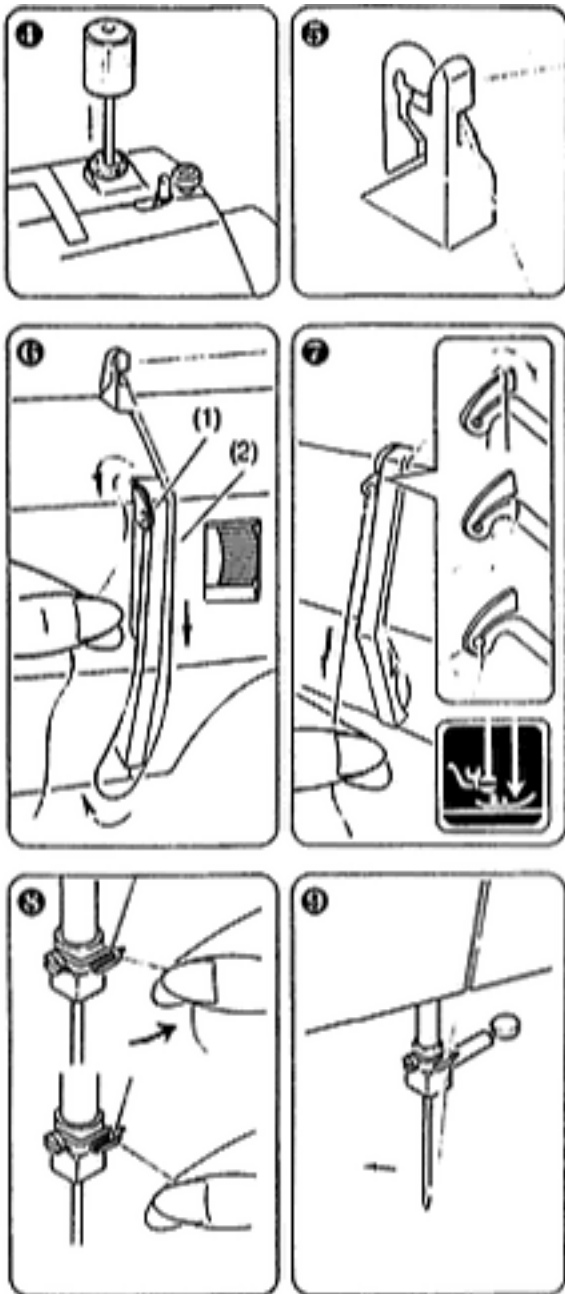
INSERTING THREADED BOBBIN CASE

Pull 10 cm of thread from bobbin case.

While holding latch replace bobbin case.



SINGER® 2 & 5 Stitch Pattern Machines



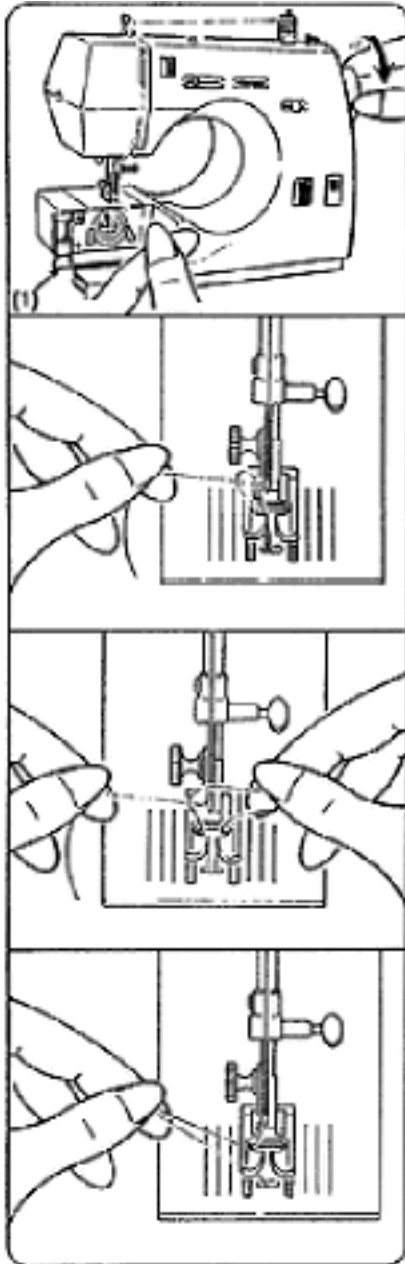
THREADING MACHINE



1. Turn power off.
2. Raise needle.
3. Raise presser foot.
4. Raise spool pin and Place felt and thread onto spool pin.
5. Pull thread into thread guide.
6. Follow arrows, guide thread into threading channel and up to take-up lever (1).
7. Thread take-up lever eye (1). (Take-up lever is slotted for easier threading) Pull down 6"~8" of thread. (Thread should be easy to pull) Lower presser foot and again pull down 6"~8" of thread. (Thread should be more difficult to pull) If thread is difficult to pull, tension discs are threaded properly. Continue to step 8. If thread pulls the same with presser foot up or down go back to step 6 and rethread ensuring thread is pulled into tension disc channel (2).
8. Pull thread through thread guide.
9. Thread needle from front to back.

SINGER®

2 & 5 Stitch Pattern Machines



RAISING BOBBIN THREAD



Open hook cover (1).

Hold needle thread.

Turn hand wheel towards you lowering, then raising
needle.

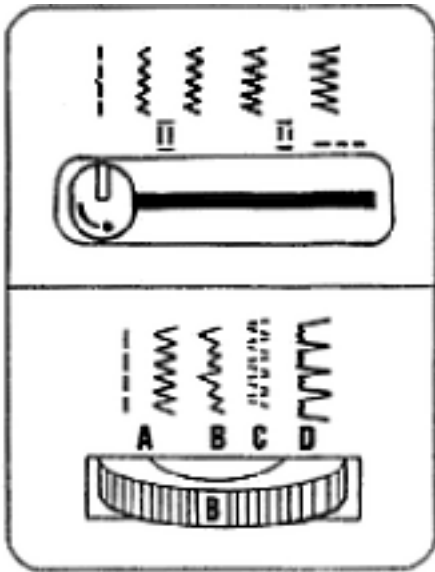
Gently pull needle thread to raise bobbin thread.

Open loop.

Pull both threads back.

Open hook cover (1).

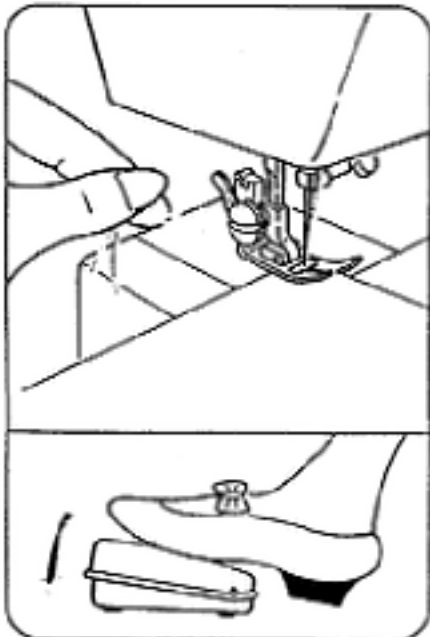
SINGER® 2 & 5 Stitch Pattern Machines



SELECTING A PATTERN

Note: To make selecting pattern easier move stitch width to "image" position.

Turn pattern selector dial to select patterns.



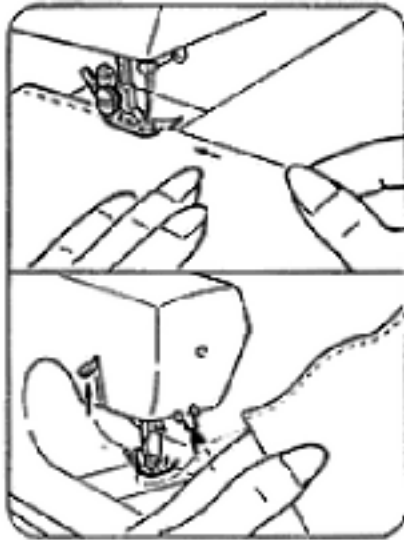
STRAIGHT STITCHING

Preparation: Refer to "Recommended settings and applications".

Place fabric under presser foot and lower foot.

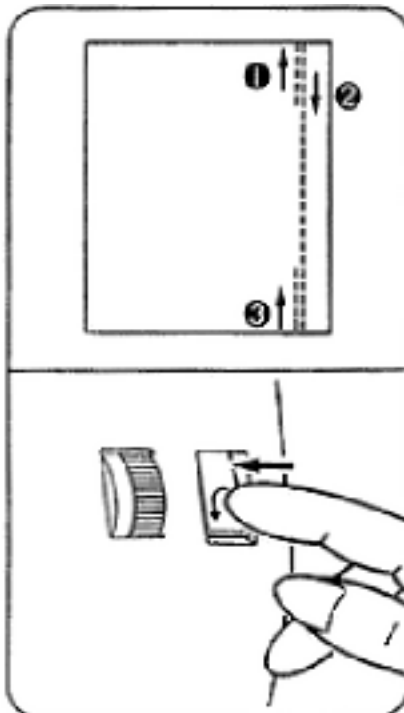
Begin sewing.

SINGER® 2 & 5 Stitch Pattern Machines



Straight Stitching continued...

Guide fabric.

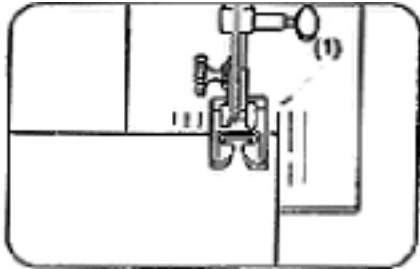


STITCHING IN REVERSE

Secure beginning and end of seam as shown.

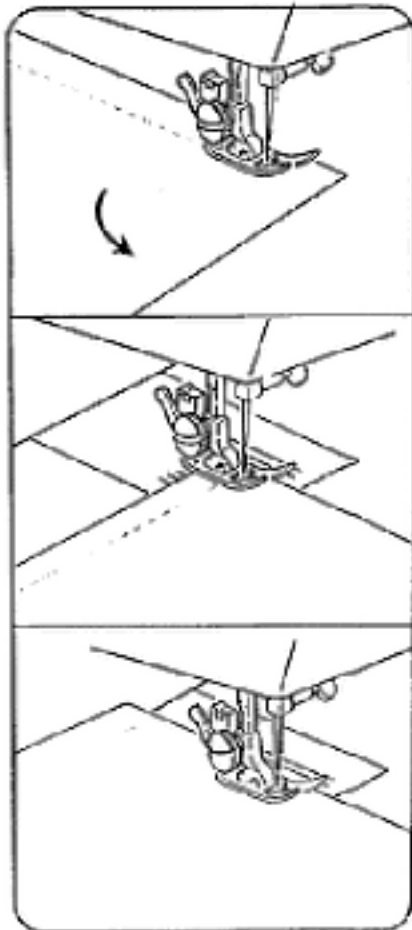
Press reverse button for steps 1 and 3.

SINGER® 2 & 5 Stitch Pattern Machines



KEEPING SEAMS STRAIGHT

Line up fabric with guideline (1) on needle plate.



TURNING SQUARE CORNERS

When stitching reaches desired pivot point, stop stitching.

Lower needle into fabric.



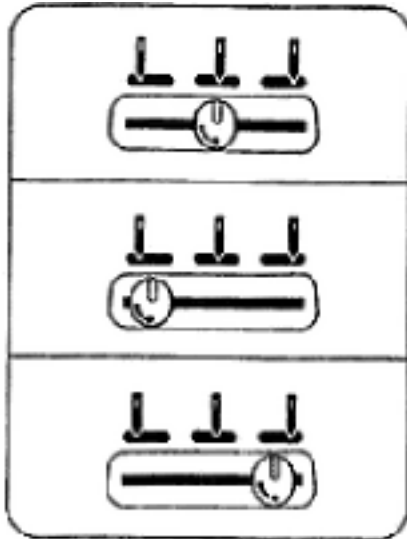
Turn fabric.



Continue stitching seam.



2 & 5 Stitch Pattern Machines

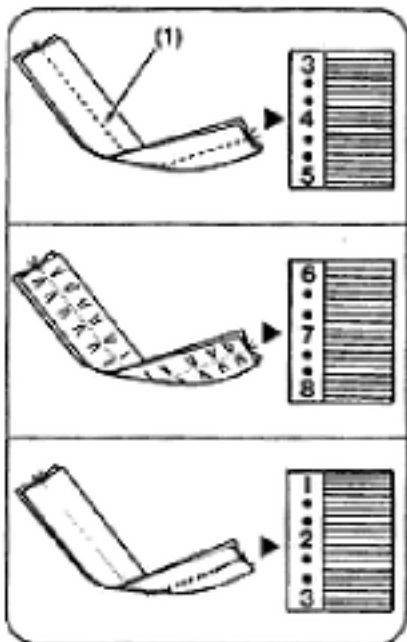


ADJUSTING NEEDLE POSITION

Center needle position.

Left needle position.

Right needle position.



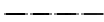
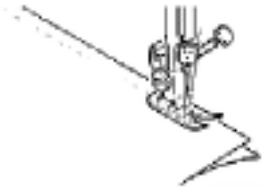
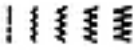



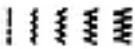


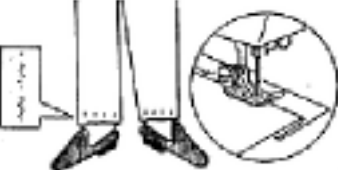
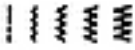




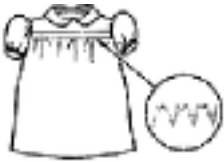
ADJUSTING THREAD TENSION

Proper tension will produce identical stitches on both the front and back of your fabric (1).

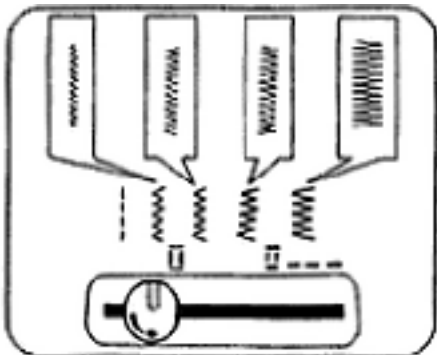
Too much tension - move tension dial to lower number.

Too little tension - move tension dial to higher number.

SINGER® 2 & 5 Stitch Pattern Machines

RECOMMENDED SETTINGS AND APPLICATIONS					
PATTERN	APPLICATIONS		STITCH LENGTH	STITCH WIDTH	PRESSER FOOT
 Straight stitch	Seaming, basting, darning and topstitching.		1.5 to 4		
 Zig-Zag	Overcasting, appliqueing, monogramming and button sewing.		0.5 to 4		
 Blindstitch	Hemming and attaching lace.		2 to 4		
 Multistitch	Mending tears, hem finishing, bartacking and attaching elastic.		1 or lower		
 M-Stitch	Stretch seams, couching and shell tucks.		2 or lower		

SINGER® 2 & 5 Stitch Pattern Machines



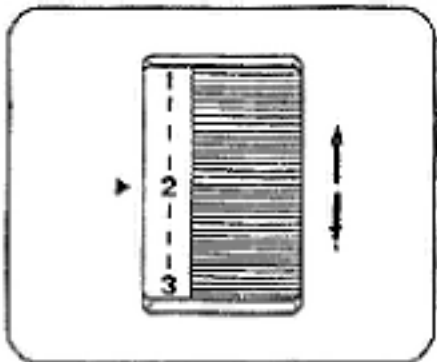
ADJUSTING STITCH WIDTH

Move lever to widen or narrow stitch.

ADJUSTING STITCH LENGTH

For more density (shorten stitch) move dial toward down.

For less density (longer stitch) move dial toward up.



FREE MOTION EMBROIDERY

RECOMMENDED SETTINGS

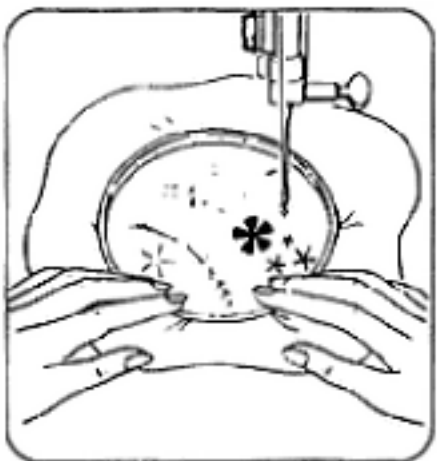
Stitch Selection: Straight or Zig-Zag

Stitch Width: 

Stitch Length: 0

Foot: Remove foot with shank

Needle Plate: General Purpose



Attach Feed Cover. Control fabric with embroidery hoop (hoop not included). Lower presser foot lifter. Lengthen or shorten stitches by moving hoop faster or slower.

INSERTING A ZIPPER

RECOMMENDED SETTINGS

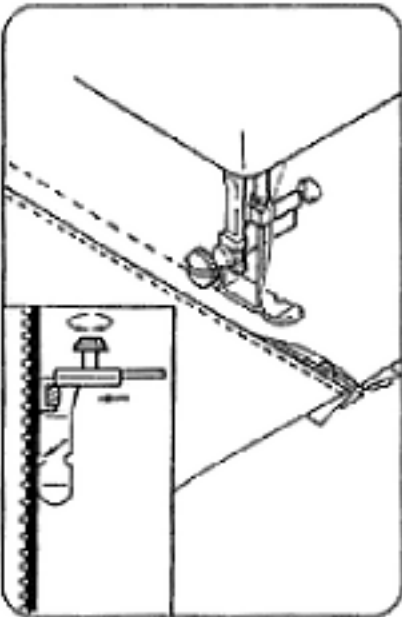
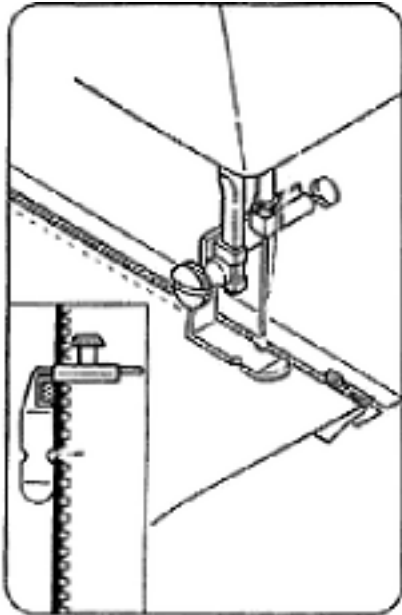
Stitch Selection: Straight Stitch

Stitch Width: 

Stitch Length: 1.5-4

Foot: Zipper

Needle Plate: General Purpose



Loosen screw (1) on zipper foot and slide it to left.

The needle will enter right notch of foot.

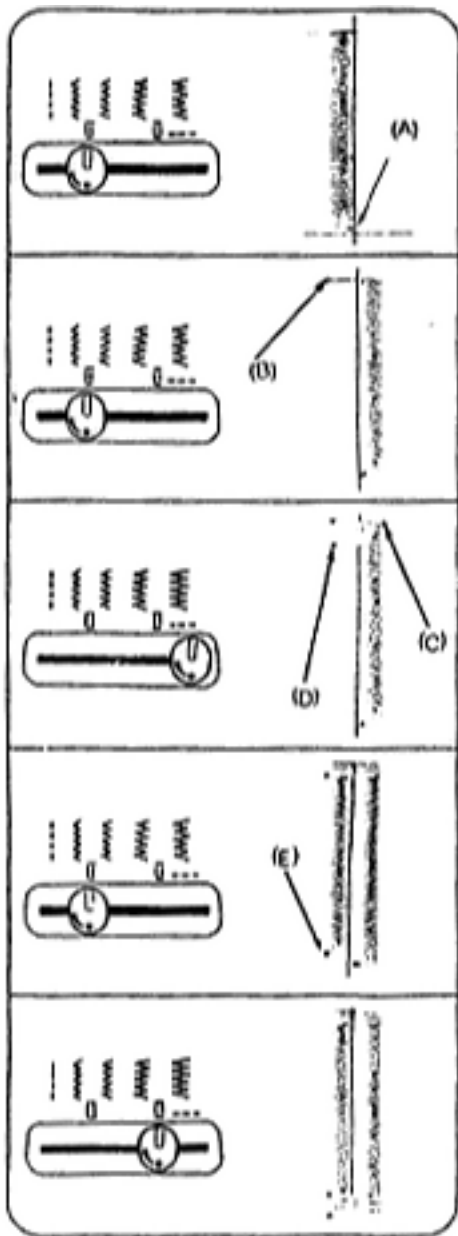
Stitch zipper to seam allowance.

Loosen screw (1) on zipper foot and slide it to right.

The needle will enter left notch of foot.

Stitch zipper to seam allowance.

SINGER® 2 & 5 Stitch Pattern Machines



SEWING BUTTONHOLES

SETTINGS:

Pattern: Zig-Zag

Presser foot: Special Purpose presser foot

Needle position: Left needle position

Stitch length:

Step 1

Mark buttonhole length on fabric. Set stitch width to leg graphic. Stitch down to point (A) and leave needle in fabric.

Step 2

Raise presser foot and turn fabric clockwise around needle.

Sew one stitch bringing needle to point (B) and raise needle close to fabric.

Step 3

Set stitch width to bar tack graphic. Wider setting (towards right) makes larger buttonhole and wider cutting space. Moving needle to opposite side above point (C).

Raise presser foot, adjust fabric slightly and lower needle into point (C). Lower presser foot.

Make 4 or 5 stitches, ending at point (D).

Step 4

Set stitch width to leg graphic. Stitch down to point (E) and raise needle close to fabric.

Step 5

Set stitch width to bar tack graphic. Make 4 or 5 stitches.

To secure stitching move stitch width selector to and take 3-4 stitches.

Raise needle and presser foot. Remove fabric from machine, clip thread ends and cut buttonhole opening.

SINGER®

2 & 5 Stitch Pattern Machines



CARING FOR YOUR MACHINE



TO REMOVE SHUTTLE HOOK

Open hook cover.

Take bobbin case out of machine.

Turn latch as illustrated. Remove shuttle race cover.

Take shuttle hook out of machine. Clean shuttle race area with lint brush.

SINGER®

2 & 5 Stitch Pattern Machines

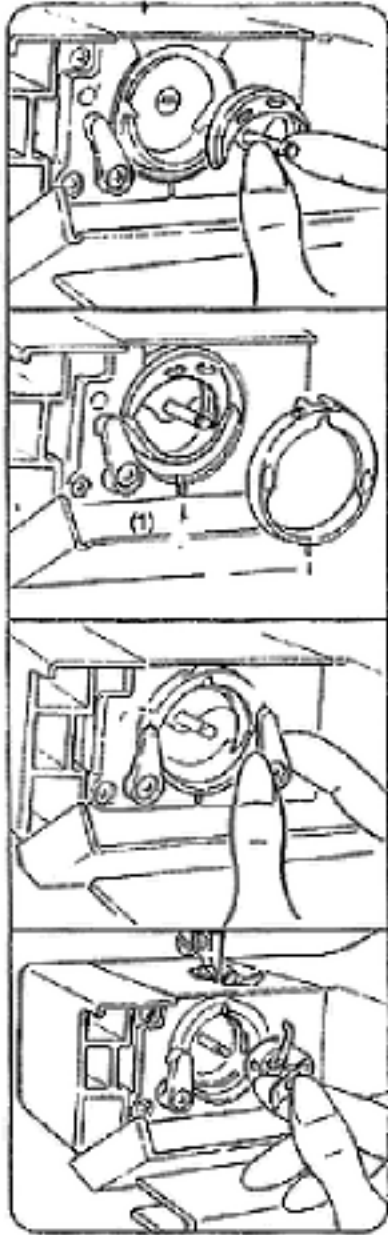
TO REPLACE SHUTTLE HOOK

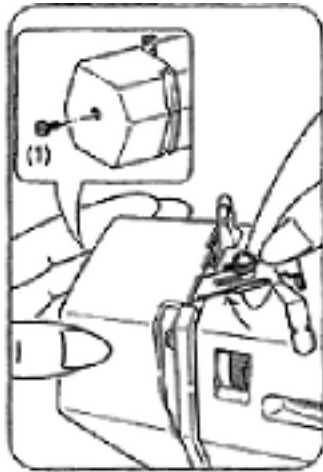
Hold shuttle by center pin and fit back into hook race.

Insert shuttle raise cover indexing bottom pin into notch (1).

Lock shuttle cover by turning latches back into position.

Insert bobbin case.





REMOVING AND REPLACING LIGHT BULB



This machine is designed to use a 15 watt maximum light bulb. Loosen and remove screw (1).

Insert zipper foot into top slot to open face plate (as illustrated).

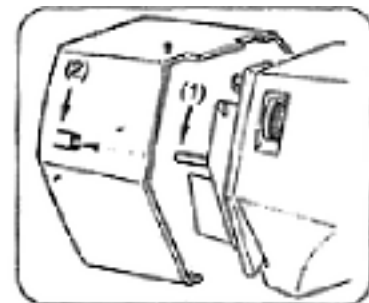
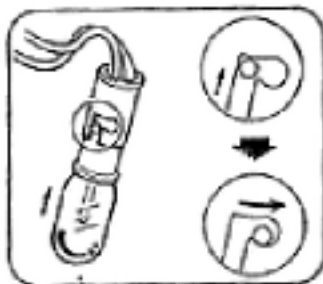
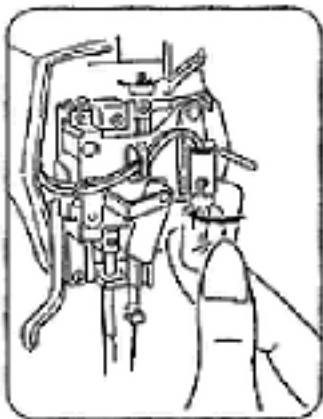
TO REMOVE LIGHT BULB

Push bulb up into socket and turn to the left to unlock bulb pins. Pull bulb down and out of socket.

TO REPLACE LIGHT BULB

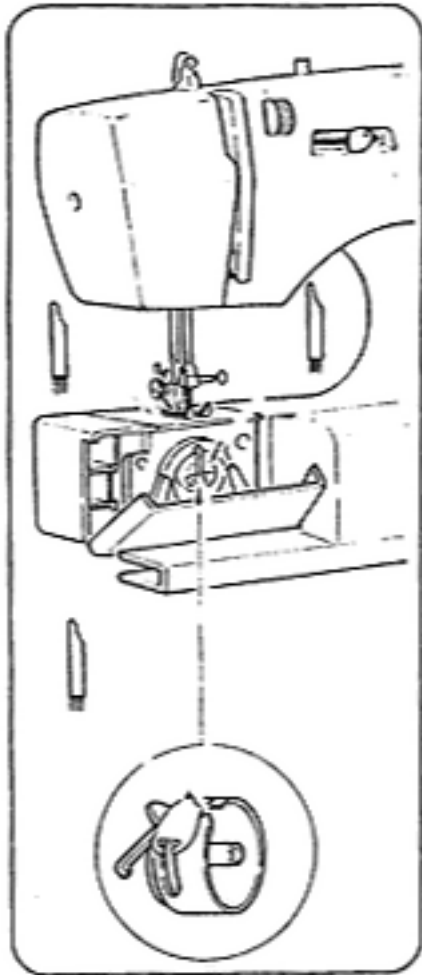
Push new bulb up into socket and turn to the right until pins lock position. Reposition face plate. Insert screw and tighten.

Align position pin (1) and boss (2). Replace face plate.



SINGER®

2 & 5 Stitch Pattern Machines



CLEANING MACHINE



To ensure reliability, take a few minutes to keep the machine clean.

* Using the lint brush, remove lint or dust from:

- presser bar
- needle bar
- shuttle hook (if there is a lot of lint in this area, remove the shuttle hook for cleaning)

- machine surface (if necessary, dampen a soft cloth and use a mild soap to clean the surface)

* Remove needle plate and clean exposed area with a lint brush.

BEFORE STORING YOUR MACHINE

* To disconnect, turn all controls to off ("0") position, then remove plug from outlet.

* Unplug foot controller from machine.

* Lower presser foot lifter.

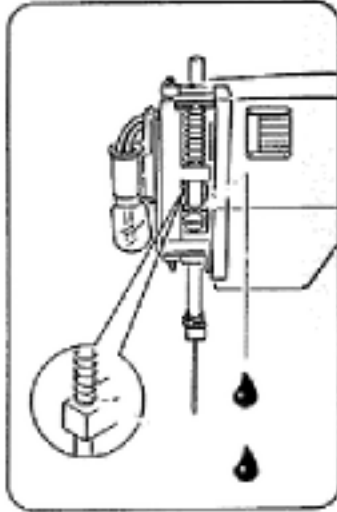
* Turn handwheel to lower needle bar to the lowest position.

* Place your machine out of reach of children in safe, dry location.

SINGER®

2 & 5 Stitch Pattern Machines

OILING MACHINE



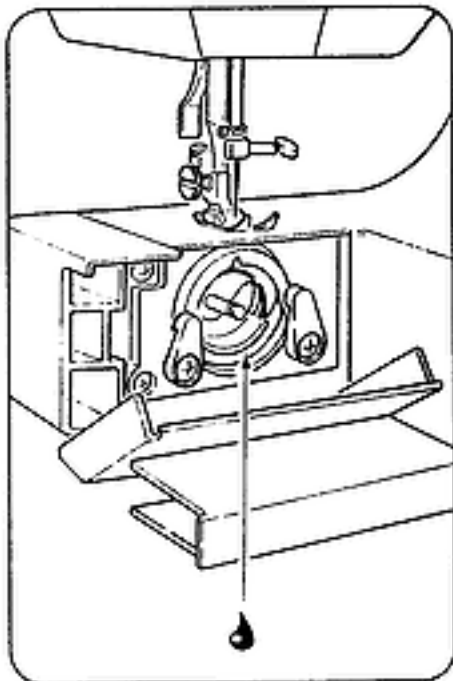
Take face plate away from machine. (refer to page 24)

Apply one drop of sewing machine oil on illustrated areas.

Open hook cover.

Take bobbin case out of machine.

Apply a drop of sewing machine oil on the bottom of shuttle race.





2 & 5 Stitch Pattern Machines

Fabric, Thread and needle Table

* The table below is a practical guide to needle and thread selections for most situations.

* Refer to it before starting to sew. Be sure to use the same size and type of thread in both needle and bobbin. For best results, use only genuine Singer® needles.

FABRIC	THREAD	NEEDLES	
		TYPE	SIZE
Delicate - tulle, chiffon, fine lace, organza	Fine mercerized cotton Fine synthetic thread	Style 2020	9/70
Lightweight - batiste, organdy, jersey, voile, taffeta, crepe, chiffon velvet, plastic film	50 mercerized cotton-silk Fine Synthetic thread	Style 2020	11/80
Medium Weight - gingham, percale, pique, linen, chintz, faille, satin, fine corduroy, velvet, suitings, knits, deep-pile fabrics, vinyl	50 mercerized cotton 60 cotton Synthetic thread	Style 2020	14/90
Medium Heavy - gabardine, tweed, sailcloth, denim, coatings, drapery, vinyl, deep-pile fabric	Heavy-duty mercerized cotton 40 to 60 cotton-Synthetic thread	Style 2020	16/100
Heavy - overcoatings, dungaree, upholstery fabrics, canvas	Heavy-duty mercerized cotton 24 to 40 cotton-Synthetic thread	Style 2020	18/100
All Weights - decorative topstitching	Buttonhole twist*	Style 2020	16/100 18/100
Synthetic Knits and Stretch Fabrics - polyester doubleknit, nylon tricot, jersey, cire, panne velvet, bonded fabrics, raschel	Synthetic thread-50 mercerized cotton-Silk	Style 2045 Ball Point	14/90
Leather - suede, kidskin lined leathers	50 mercerized cotton Synthetic thread-Silk	Style 2032	11/80 14/90 16/100

*Use with standard sewing thread in bobbin



2 & 5 Stitch Pattern Machines

PERFORMANCE CHECKLIST

When sewing difficulties occur look back through this manual to make sure you are correctly following the instructions. If you still have a problem, the reminders below may help you to correct it.

NEEDLE DOES NOT MOVE

Is machine connected to electrical supply?
Is the power and light switch on?
Is controller connected?

NEEDLE MOVES BUT STITCH IS NOT FORMED

Is needle defective?
Is needle fully inserted into needle clamp?
Are bobbin and needle correctly threaded?
Is bobbin case correctly inserted into shuttle race area?

NEEDLE BREAKS

Is needle straight and sharp?
Is needle correct size?
Is needle fully inserted into needle clamp?
Are controls properly set?
Are accessories correct for application?

BOBBIN WINDING DIFFICULTIES

Is thread unwinding freely from spool?
Is bobbin winder engaged?
Is thread end securely held at start of wind?

UPPER THREAD BREAKS

Is machine properly threaded?
Is thread freely unwinding from spool? Is needle correct size for thread?
Is upper thread tension too tight?
Is bobbin case properly inserted?
Is bobbin rim free of nicks?

LOWER THREAD BREAKS

Is bobbin correctly wound?
Is bobbin correctly inserted into bobbin case?
Is bobbin case correctly threaded?

SKIPPED STITCHES

Is machine properly threaded?
Is fabric firmly held down?
Is needle correct style and size?
Is needle straight and sharp?

FABRIC DOES NOT MOVE PROPERLY UNDER PRESSER FOOT

Is presser foot correctly attached to machine?
Is presser foot lowered?
Is stitch length correctly set?